

Explore our brand-new resource hub for early years educators

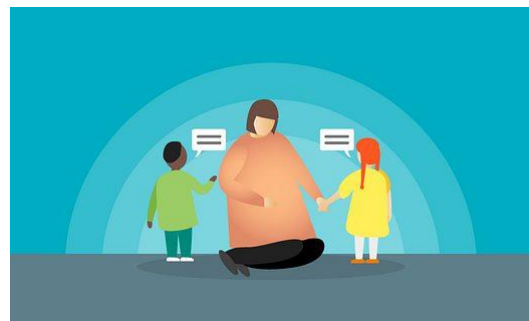


Brand-new resource hub for early years educators

Evidence and resources on demand

Our newly launched early years hub is a one-stop shop for evidence and resources to support your practice.

The content has been developed by experts in the sector and uses real life examples of practice to support educators in enriching their practice with the latest evidence.



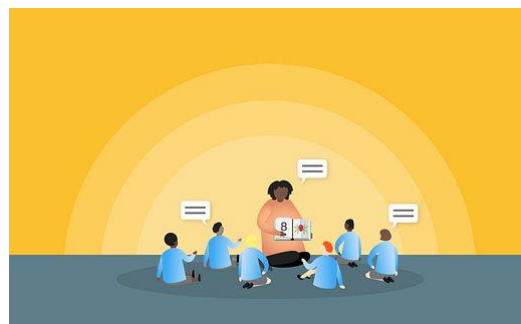
Explore the hub today

Find out about our online resource to support high-quality interactions

EEF blog

“There are two well-evidenced strategies which we can use moment-by-moment to improve children’s enjoyment and achievement in the early years.”

Julian Grenier, our senior content and engagement manager, introduces our new resource to support high-quality interactions in the early years.



[Read more](#)

Support children’s mental health and wellbeing with our downloadable resource

EEF blog

“Educators working in the early years play a vital role in supporting children’s wellbeing ‘in the moment’. We create consistent daily routines and provide nurturing care in a welcoming and safe environment.”

Lauren Grocott, our early years specialist, introduces a new downloadable resource to summarise practice recommendations for supporting the mental health and wellbeing of young children.



[Read more](#)



Help shape future early years projects

Have your say

Do you make decisions on professional development for your early years setting?

We want to hear about your experience and insights of professional development opportunities.

By completing our survey with Cooper Gibson Research, you'll help to shape our future early years projects.

**Take the
survey**



Access low-cost professional development for your staff

Subsidised programme

Developed by the National Day Nurseries Association, **Maths Champions** is a professional development programme for nursery practitioners, focused on supporting young children's early mathematical development in early years settings.

We've run **two trials** of the Maths Champions programme, which both showed positive outcomes for children's mathematical attainment.

These results have a very high security rating of five padlocks, the maximum on the EEF scale, meaning we are very confident that this difference was due to the programme and not to other factors.

We're subsidising the cost of the programme so that more early years settings can access it.

[Find out how
to sign up](#)



What do nursery songs and self-regulation have in common?

Guest blog

"Self-regulation is best developed in meaningful contexts that are motivating for children, like when they are playing and enjoying themselves."

Professor Sara Baker considers how nursery rhymes can boost children's self-regulation.

Sara Baker is a Professor of Developmental Psychology and Education at the University of Cambridge. She also works for PEDAL, the Centre for Play in Education, Development and Learning.

[Read more](#)